

A FAST FLIGHT
TO THE
future



65TH ANNUAL MEETING

Thursday, June 16, 2016 • 5:00 P.M. • Parshall High School • Parshall, North Dakota

PREPARE FOR TAKEOFF, MEMBERS!

AGENDA FOR THE 65TH ANNUAL MEETING

Thursday, June 16, 2016 • Parshall High School

Registration and Meal by Kyle's Katering	5:00 p.m. – 6:30 p.m.
Meeting	6:30 p.m.
Presentation of Colors	RTC Employees
Percussion	Remington Bigelow
The National Anthem	Lexi Blunck
Call to Order	Jeanette Hoff
Invocation	Dan Dapelo
Recognition of Military Personnel	Jeanette Hoff
Recognition of Guests and Board Introduction	Jeanette Hoff
Reading of Meeting Notice and Proof of Mailing	Jennifer Sorenson
Approval of Minutes	Jeanette Hoff
Nominating Committee Report	Mylo Wolding
Introduction of Candidates	Jennifer Sorenson
Election of Directors	Jennifer Sorenson

– DRAWING FOR PRIZES –

President's Report	Jeanette Hoff
Audit Report	David Aamot
CEO/General Manager's Report	Shane Hart
Scholarship Winners	Shane Hart
Award Presentations	Shane Hart and Jeanette Hoff

– DRAWING FOR PRIZES –

Discussion of Proposed Bylaw Changes	Alicia Brenna
Unfinished Business	Jeanette Hoff
Election Results	Jennifer Sorenson
New Business	Jeanette Hoff

– CHILDREN'S DRAWING –

Amazon Kindle Fire

– GRAND PRIZE DRAWING –

One year of free RTC local phone service, an Amazon Echo, and an Amazon Tap

Adjournment	Jeanette Hoff
-------------	---------------



DIRECTORS



PAUL WISNESS
District 1A
*Alexander, Arnegard, Keene,
Squaw Gap, Watford City*



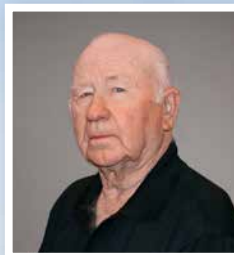
JENNIFER SORENSON
Secretary/Treasurer
District 1B
*Alexander, Arnegard, Keene,
Squaw Gap, Watford City*



JARED EAGLE
District 2A
Mandree, New Town, Ross



TERRY WILBER
District 2B
Mandree, New Town, Ross



MARLYN FROSETH
District 3
Kenmare, Norma, Spencer



JEANETTE HOFF
President
District 4
Parshall, Plaza



GLENN SCHREINER
District 5
*Douglas, Makoti, Max,
Roseglen, Ryder*



BARBARA STEINMETZ
Vice President
District 6
Emmet, Garrison



ALICIA BRENNA
Attorney

“EXPLORATION IS WIRED INTO OUR BRAINS. IF WE SEE THE HORIZON, WE WANT TO KNOW WHAT’S BEYOND.”

— BUZZ ALDRIN





64th ANNUAL MEETING MINUTES

The 64th Annual Meeting of Reservation Telephone Cooperative was held on Thursday, June 18, 2015 at the Parshall High School. The registration and meal by Kyle's Katering was held from 5 p.m. to 6:30 p.m. The colors were presented by Carl Brunsell and Daryl Johnson with percussion by Hunter Andes. Yuki Johnson sang the National Anthem.

President Hoff called the meeting to order. Pastor Alan Hathaway gave the invocation. President Hoff welcomed all and thanked those who participated in the opening ceremony along with the RTC staff for the meeting preparations. Human Resources Manager Gretchen Edwards was named as Recording Secretary for the meeting and Attorney Alicia Brenna was appointed Parliamentarian of the meeting. There were 324 voting members present. President Hoff declared the existence of a quorum.

President Hoff asked all who had served in the military to stand and be recognized.

President Hoff introduced Board members and spouses: Marlyn and LaDonna Froseth, Paul Wisness, Terry and Marcia Wilber, Jennifer Sorenson, Hilman and Phyllis Anderson, Barb and Doug Steinmetz, and President Hoff's husband, Steven Hoff, along with CEO/GM Shane Hart and Celeste, Attorney Alicia Brenna, and Financial Manager Dave Aamot and Brenda. Retiring CEO Royce Aslakson and his wife Joyce were introduced. Several special guests were also introduced.

A letter was read by a representative of Senator Heidi Heitkamp's office. President Hoff read letters from Senator John Hoeven and Congressman Kevin Cramer.

A motion was made and seconded to dispense with the reading of the Notice of Annual Meeting and Proof of Mailing. M/C

A motion was made and seconded to dispense with the reading of the 63rd Annual Meeting Minutes and to approve as per copy in Annual Meeting Book. M/C

President Hoff called for a motion to dispense with the reading of the Nominating Committee Report. A motion was made and seconded to dispense with the reading of the Nominating Committee report and to approve the 2015 Nominating Committee Report as printed in the Annual Meeting booklet. M/C

President Hoff introduced the candidates for director districts.

Candidates for District 2A are Jared Eagle and Duane Estvold. Candidate for District 5 is Glenn Schreiner and he is running unopposed.

Each candidate was invited to speak for 3-5 minutes.

A motion was made and seconded to cast a unanimous ballot for Glenn Schreiner for District 5.

Ballots were distributed by RTC Employees to the voting delegates for the election of a director for District 2A and then collected to be counted by the Election Committee.

President Hoff introduced Marketing Manager Kristin Jaeger and Construction Manager Tim Jarski as co-chairs of the Annual Meeting Committee. There were drawings for door prizes.

Kristin announced the companies that sponsored some of the door prizes and introduced the Annual Meeting Committee members.

President Hoff gave a short report thanking Royce for serving the cooperative for the past 28 years and

thanking his family for their support of Royce and of RTC. Hoff announced that Shane Hart had been chosen as the new CEO/General Manager.

Looking back on 2014, RTC experienced growth in our services, access lines and employees. With the growth of RTC, the number of employees has increased from 75 employees in 2009 to 110 employees at the end of 2014. Looking forward, we are in a unique situation as one of the few areas in the country that is seeing an increase in access lines. RTC remains in a multi-year fiber optic buildout of state-of-the-art voice, data and video services to all of our member-owners. This takes a few years to complete, but we will get it done. With new customers, our income has gone up but so have our expenses to reach everyone. Cable locate costs, road moves and other building expansion occurring in our service area are a big increase to our expenses. In 2014, cable locates escalated to over 42,000 for the year at a cost to RTC of \$1.4 million. Since 2010, RTC has spent over \$5 million moving cables for NDDOT while they complete road construction. The Board of Directors has been reviewing capital credit obligations and RTC will make a general retirement when it is financially viable to do so as determined by the Board of Directors.

RTC continues to be an essential part of building a better future for our communities. RTC sponsors youth scholarships and community events, and makes donations to our communities. RTC continues working to make member communities appealing places for all who call them home and to keep you connected to the world.

Financial Manager David Aamot presented the audit report. Aamot noted that RTC auditor Moss Adams gave RTC a clean audit report opinion for 2014 and directed members to look at their statement in the Annual Meeting book.

Manager Aamot reviewed the Statement of Operations and the Balance Sheet. He noted the total operating revenue of \$29,763,633 for the year 2014, an increase of almost \$3.7

million and 14 percent over 2013. Operation and interest expenses increased by 16.5 percent from 2013 to 2014. Net margins for 2014 totaled \$3,565,111. There was \$266,437 of capital credits retirement in 2014. Plant increased by over \$16.5 million consisting of mostly Fiber-to-the-Home projects. After subtracting depreciation and current and other investments, RTC has total assets of \$108,246,031.

Under the liabilities section, long-term debt is up \$13 million due to the Fiber-to-the-Home project, as well as various road moves. Also take note of the growth in services over the last five years as we transition from copper to fiber.

A motion was made and seconded to accept the Audit Report for 2014. M/C

President Hoff introduced CEO/General Manager Shane Hart. New CEO/General Manager Hart introduced himself to attendees, sharing that while he is new to his position, he is not new to RTC. He noted that the meeting theme is "Looking Back, Moving Forward." Looking back we can see how far we've come in the last 28 years when retiring CEO/General Manager Royce Aslakson first started at RTC. In 1987, RTC had 24 employees and as of today we have 121 employees. RTC's total plant investment in 1987 was \$16 million, today it is \$165 million. RTC had almost \$3 million in revenue in 1987 compared to almost \$30 million today. RTC is continuing to move forward at a rapid pace with several projects going on. We are in the last year of our five-year American Recovery and Reinvestment Act, also known as Obama's Stimulus Plan, which covers Roseglen, Parshall, New Town, Mandaree and Squaw Gap. We are also in year three of a fiber buildout in Watford City and surrounding areas, which provides tremendous opportunity and growth in video, voice and data to many new customers. RTC is committed to offering faster Internet speeds, the fastest Internet speeds in the state. We recently launched our Gigabit service in select areas and hope to continue to expand the areas where we can offer this. We are working to improve our video services by offering TV Everywhere which will allow video subscribers to watch channels that they have subscribed to on smartphones and iPads.

CEO/General Manager Hart congratulated employees for the awards they received in 2014. He pointed out the Service Awards, Exceptional Employee Awards and those that received Safe Driving Certificates. He also recognized all employees, management and congratulated Kristin Jaeger for her efforts in RTC receiving the NTCA Telechoice Award for the Cooperative's Overview Brochure. CEO/GM Hart recognized the 2015 RTC Scholarship recipients attending the annual meeting.

President Hoff and CEO/General Manager Hart presented plaques from NTCA recognizing David Aamot and Carl Brunsell for their 25 years of service. Plaques were also presented to retirees Nancy Vorwerk for 34 years, Denese Westgard for 28 years, Hilman Anderson for 27 years, Dennis Heer for 9 years, and Royce Aslakson for 28 years of service. Royce's grandchildren sang a few songs in his honor. Royce shared a few thoughts with everyone. There were drawings for door prizes.

President Hoff called for unfinished business. There was none.

The election results for District 2A were announced with Jared Eagle being elected by a vote of 199 to 102 votes.

President Hoff called for new business. There was none.

Drawings were held for one year of local service, a flat screen TV and for the kid's prize of a Nabi.

A motion was made and seconded to adjourn the meeting. M/C

Meeting adjourned.

Respectfully submitted,



Gretchen Edwards
Recording Secretary

RTC NOMINATING COMMITTEE

In compliance with Article IV Section 4.5 of the Reservation Telephone Cooperative by-laws, the nominating committee met on May 17, 2016. Members present: Mylo Wolding, Curt Wittmayer, Stephen Hannegrefs, Ron Krebsbach, Edmund Seidler, Charlene Olson and Sharleen Thompson.

The following persons were nominated as candidates to be voted on at the Reservation Telephone Annual Meeting on Tuesday, June 16, 2016:

District 1A
ANGELA MOE
WAYNE SKARDA

District 4
JEANETTE HOFF

District 6
BARBARA STEINMETZ

RESERVATION TELEPHONE COOPERATIVE NOMINATING COMMITTEE

meeting minutes

Tuesday, May 17, 2016

The Nominating Committee met Tuesday, May 17, 2016 at 10:00 a.m. in the RTC HQ Conference Room in Parshall. Members present were: Mylo Wolding, Curt Wittmayer, Stephen Hannegrefs, Ron Krebsbach, Edmund Seidler, Charlene Olson and Sharleen Thompson.

Motion and second to have Mylo Wolding as Chairman. M/C

Motion and second to nominate Gretchen Edwards, RTC Human Resources Manager as Recording Secretary. M/C

The Nominating Committee reviewed the packet they were given including the Notice of Meeting, RTC by-laws regarding the nomination, Minutes of 2015 Nominating Committee Meeting and election of board members and the Director Composition Report.

Motion and second to approve the Minutes of the 2015 Nominating Committee Meeting. M/C

The cooperative districts and current directors were reviewed. There was discussion

regarding representation of each district and the percentages of each district.

The Nominating Committee reviewed the signed Certification of Nominee forms completed by Angela Moe, Wayne Skarda, Barbara Steinmetz and Jeanette Hoff.

Motion and second to approve list of candidates; District 1A – Angela Moe; District 1A – Wayne Skarda; District 4 – Jeanette Hoff; District 6 – Barbara Steinmetz. M/C

Motion and second that it is the recommendation of the Nominating Committee to have the paper ballots, alternated 50/50 with the candidate's names at the top of the ballot. M/C.

Chairman Wolding called for other business. Discussed if any committee members would be available to count ballots, if necessary. Chairman Wolding agreed to read the Minutes of the Nominating Committee Meeting at the Annual Meeting if needed.

Motion and second to adjourn. M/C

Meeting adjourned.

DIRECTOR CANDIDATES

WAYNE SKARDA

District 1A Candidate



Wayne Skarda lives in the rural Keene area with his wife Kim, where he presently works on the family farm.

Wayne and Kim were both raised in

the Watford City and Keene area, and went to school there. They have three grown daughters. After working in Wyoming for 20 years for a rural electric cooperative, they moved to Garrison in 2010 where Wayne worked at McLean Electric Cooperative as operations manager. In 2014, he retired from the electric industry.

“The reason I am interested in becoming a director for RTC is that I would like the opportunity to work with the Board of Directors, management, and employees to have RTC continue to provide reliable telecommunication services with up-to-date technology at a reasonable cost to its members. I feel that my experience with working with boards of directors and management of other cooperatives would be beneficial as a director for RTC,” he says.

ANGELA MOE

District 1A Candidate



Angela Moe was raised in Watford City and grew up with her dad working at an electric power cooperative. She graduated from Lamson Junior

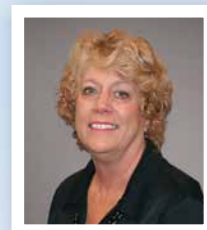
College in Phoenix, Arizona. She lived in Arizona, Colorado, and South Dakota before moving back to North Dakota in 2010 after a family tragedy. Angela has worked in the banking/finance field, was a licensed insurance representative, a social services specialist and also worked at a telephone, high-speed Internet, and cable TV company. In the last five years,

she was the lead secretary at Watford City High School during the booming economy. She is married to Terry Moe, General Manager at Nuverra in Watford City. They have a daughter, Hayley, who is a junior at Roanoke College in Salem, Virginia.

“I am interested in being a board member at RTC to help fulfill their mission of providing quality telecommunication services at competitive prices. Additionally, I believe reliable Internet service and cable TV availability to RTC members is important. I have always noticed and appreciated friendly and helpful customer service, and I do not want to lose sight of valuable employees,” she says.

JEANETTE HOFF

District 4 Candidate



Jeanette farms with her husband Steve near Parshall. After graduating from Minot State University, Jeanette taught school in Parshall, North

Shore, and White Shield for a combined total of 20 years.

The National Telecommunications Cooperative Association provides opportunities for board members to gain knowledge within the telecommunications field. Because of her participation in these seminars, Jeanette has been recognized by the NTCA with the “Excellence in Leadership Award” for outstanding commitment to telecommunications and organizational education. She has also served as a “team leader” for NTCA during legislative conference visits of our Senators and Representatives.

Jeanette is currently involved with the following organizations:

- RTC Board President
- First Lutheran Church Choir Director

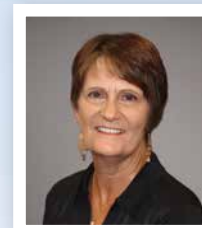
- First Lutheran Church Quilting Group
- Parshall Promoters supporter
- Plaza Quilting Guild

Previously, Jeanette’s activities included: NDATC Board Past President, Parshall Township Clerk for 26 years (retiring in 2012), Parshall Horizons Circle, First Lutheran Church Council, Parshall Education Association, Parshall Dive-Rescue squad, Chairperson for the Parshall Centennial Celebration (celebration in June of 2014), and Big Band Reflections/Dixie Band.

Jeanette and Steve have three sons (two are married) and seven grandchildren. Jeanette enjoys being with family and friends, church and community involvement, as well as sewing, painting, golfing, listening to music, and being at the lake.

BARBARA STEINMETZ

District 6 Candidate



Barbara Steinmetz lives in Garrison with her husband, Doug. She was raised near Oberon, North Dakota. Her family was always active in the com-

munity and cooperatives.

Barb is currently involved in the following activities:

- RTC Board Vice-President
- Reservation Telephone Cooperative Board for six years
- Volunteer at the Benedictine Living Center
- Member of St. Paul Lutheran Church

Barb worked in the banking industry for 20 years. She and Doug have lived in Garrison since 2006. Their daughter, Jill, lives in Boise, Idaho and son, Matt, lives in Cody, Wyoming.

Speed PROPELS infinite POSSIBILITIES



WELCOME TO RTC'S 65TH ANNUAL MEETING, "A FAST FLIGHT TO THE FUTURE." We had to think fast to come up with this theme, since tonight's gathering will highlight RTC's progress in bringing much faster Internet speeds to our member-owners and customers.



JEANETTE HOFF
Board President

PROGRESS AT A FAST PACE, DESPITE OIL SLOWDOWNS

Even though drilling has slowed down in our service area, causing the population in several of our communities to decline from all-time highs, RTC continues to move forward at a fast pace. This is because those residents that stayed in the area are looking to take advantage of the excellent housing opportunities created by decreased demand and more affordable prices. As people move into newly built homes and apartments, RTC has seen increased interest in our communications services.



SHANE HART
CEO/General Manager

As shown on the graphs on page 12, the number of subscribers in each of RTC's major service offerings — phone access lines, Internet, and TV — all went up during 2015. This is definitely progress in the right direction, and we're thrilled to be experiencing this kind of growth.

OUR GIG SPEEDS ARE OUT OF THIS WORLD

On February 21, 2016, RTC was recognized by NTCA—The Rural Broadband Association as a Certified

Gig-Capable Provider for delivering gigabit broadband speeds and enabling technological innovation. NTCA is the premier association representing nearly 900 independent, community-based telecommunications companies that are leading innovation in rural and small-town America. We're honored to receive this designation, which certifies that RTC can offer gigabit speeds in at least one of the 18 exchanges we serve. In fact, we can now offer gigabit speeds in several of our exchanges. While we're very proud of this accomplishment, we know there's more work to do as our goal is to be able to offer this level of speed to all of our coop members.

As a Certified Gig-Capable Provider, RTC joins a national campaign to build awareness and industry recognition of community-based telecom providers that have





A GIGABIT (OR GIG) IS 1,000 MBPS,
WHICH IS 100 TIMES FASTER THAN THE
10 MBPS SERVICE CURRENTLY USED
IN MANY U.S. HOUSEHOLDS.

built communications networks capable of delivering gigabit broadband speeds.

To get you up to speed on this technology, a gigabit (or Gig) is 1,000 Mbps, which is 100 times faster than the 10 Mbps service currently used in many U.S. households. With gigabit speeds, you can upload a 1 GB file in just seconds, whereas with a 20 Mbps connection, the same operation could take several minutes. In addition, the quality of streaming video and video conferencing is greatly enhanced, enabling real-time collaboration and the use of advanced cloud-based applications.

RTC IS WORKING QUICKLY ON OUR FIBER NETWORK

To make sure our member-owners and customers — even those in remote areas — have access to high speed Internet, RTC is investing very aggressively in our fiber network. RTC invested \$13,000,000 in our plant infrastructure in 2015 and plans to invest \$14,000,000 more in 2016. These large capital investments are made possible through loan funds from Rural Utilities Service, a division of the U.S. Department of Agriculture that administers

programs providing much-needed infrastructure or infrastructure improvements to rural communities.

Due to this investment, RTC is able to bring faster Internet speeds and enhanced video services to new and existing subscribers. We continue to build out our Fiber-to-the-Home infrastructure at a rapid rate. At the present time, 74 percent of our telephone subscribers, 79 percent of our Internet subscribers, and 85 percent of our video subscribers are served via fiber. Those percentages will continue to rise as we make the transition from copper-based services to fiber-based services in additional areas.

JUST IMAGINE WHAT'S AHEAD

To understand the importance of building fiber networks, it's useful to look back at a couple of other life-changing infrastructure projects. By 1900, much of our nation's railroad system was in place; it cleared the way for the settlement of the West, provided new economic opportunities, and stimulated the development of communities. In the 1950s and 1960s, the new Interstate Highway System brought business to the towns it went through while towns far from the new faster roads

struggled to survive. Today, fiber is becoming as essential to business growth, and everyday life in general, as railroad tracks and highways were in the previous century.

When fiber networks come to smaller cities and rural communities, such as those in RTC's service area, it helps level the playing field and close the urban-rural technology gap. Existing businesses can access the Internet speeds and reliability needed to expand e-commerce. Economic development organizations have an easier time attracting new businesses. The door is opened for telemedicine networks to connect specialists to patients in remote areas. And educational opportunities, once only found in large schools, can now be delivered to rural classrooms via online education.

THANKS FOR JOINING US ON THE JOURNEY

We greatly appreciate your confidence in RTC and your choice of us to be your provider. No matter where you hope to go with your family or business, know that RTC will supply the advanced technology and local customer service to get you there. Together, we'll take "A Fast Flight to the Future."

REVENUES & EXPENSES

OPERATING REVENUES:

	2015	2014
Local Customer Services	\$ 5,903,869	\$ 5,288,086
Inter-carrier Services	7,209,520	6,736,531
Universal Service and High Cost Support	9,049,032	8,042,263
Television Revenue	3,618,546	3,133,214
Internet Revenue	2,938,775	2,875,666
Miscellaneous Revenue	3,497,638	3,687,873
TOTAL OPERATING REVENUES	32,217,380	29,763,633

OPERATING EXPENSES:

Plant	10,126,610	10,343,090
Depreciation	8,058,119	6,101,707
Customer and Corporate	4,475,402	4,490,086
Other Operating Taxes	95,923	94,227
Non-regulated Expenses	5,820,840	5,449,919
TOTAL OPERATING EXPENSES	28,576,894	26,479,029

OPERATING MARGIN

3,640,486	3,284,604
------------------	------------------

NET NON-OPERATING INCOME

1,678,575	2,265,614
------------------	------------------

NET MARGIN BEFORE INTEREST AND INCOME TAXES

5,319,061	5,550,218
------------------	------------------

Interest on Long-Term Debt	2,273,355	1,975,999
----------------------------	-----------	-----------

Income Taxes	73,209	9,108
--------------	--------	-------

NET MARGINS

\$ 2,972,497	\$ 3,565,111
---------------------	---------------------

STATEMENT OF PATRONAGE CAPITAL:

Patronage Capital - Beginning of Year	\$ 29,090,139	\$ 25,765,370
Net Margins for Period	2,972,497	3,565,111
Federal Excise Tax Refund to Patrons	28,054	26,095
Retirement of Capital Credits	(448,111)	(266,437)
Patronage Capital - End of Year	\$ 31,642,579	\$ 29,090,139

AUDIT STATEMENT

In our opinion, the consolidated financial statements referred to above present fairly, in all material respects, the consolidated financial position of Reservation Telephone Cooperative and subsidiary as of December 31, 2015 and 2014, and the results of their operations and their cash flows for the years then ended in accordance with accounting principles generally accepted in the United States of America. —Moss Adams, LLP

ASSETS & LIABILITIES

ASSETS (What We Own)

Cash and Investments

Receivables

Materials and Supplies

Prepayments

Total Current Assets

Long-term Investments

Other Noncurrent Assets

Total Investments

Total Telephone Plant

Depreciation

Net Telephone Plant

TOTAL ASSETS

	2015	2014
\$	1,901,373	\$ 1,308,013
	3,328,325	3,627,261
	4,654,613	4,414,347
	355,972	264,059
	10,240,283	9,613,680
	5,553,734	5,527,285
	124,934	130,167
	5,678,668	5,657,452
	167,459,936	164,678,065
	(71,467,007)	(71,703,166)
	95,992,929	92,974,899
\$	111,911,880	\$ 108,246,031

LIABILITIES (What We Owe)

Accounts Payable

Advance Payments

Other Current Liabilities

Current Portion of Debt

Total Current Liabilities

Long-term Debt

Deferred Credits

Patronage Capital

TOTAL LIABILITIES and CAPITAL

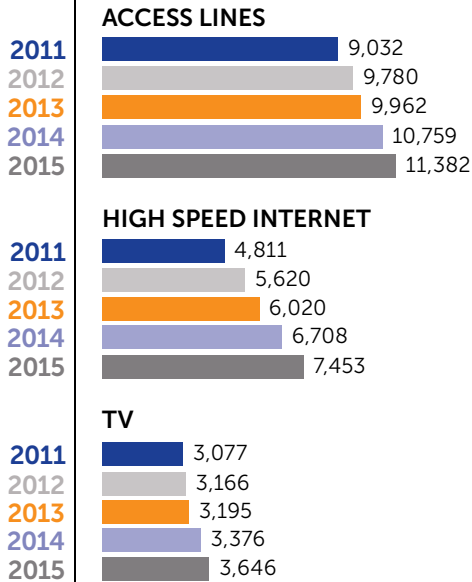
\$	4,111,022	\$ 3,382,849
	—	71,069
	674,823	558,517
	5,271,158	5,469,530
	10,057,003	9,481,965
	69,974,987	69,412,016
	237,311	261,911
	31,642,579	29,090,139
\$	111,911,880	\$ 108,246,031





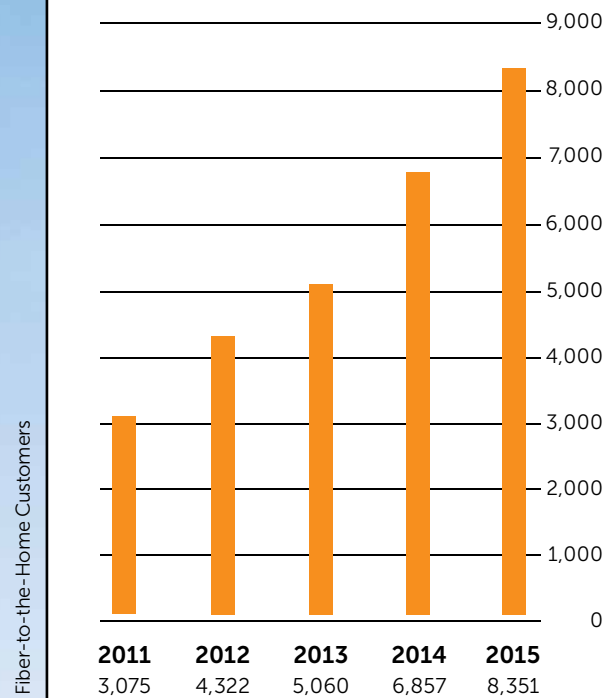
financials

GROWTH IN SERVICES

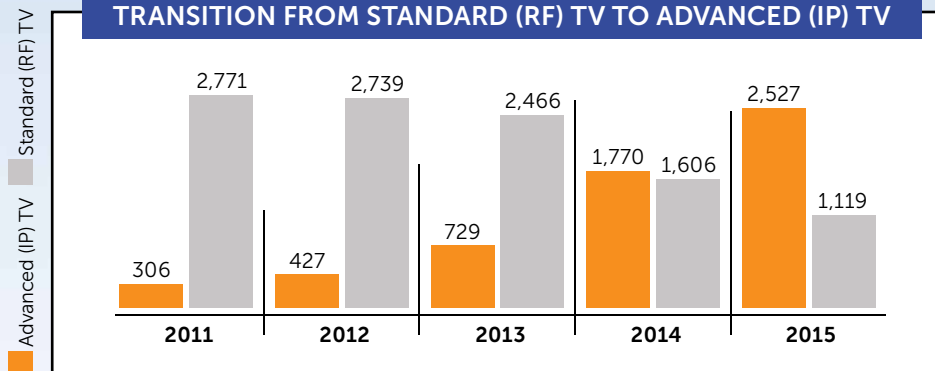


*In March of 2015, RTC reached over 11,000 access lines and this continues to grow each month

TRANSITION FROM COPPER-BASED SERVICES TO FIBER-BASED SERVICES



TRANSITION FROM STANDARD (RF) TV TO ADVANCED (IP) TV





BYLAWS OF RESERVATION TELEPHONE COOPERATIVE
ARTICLE IV BOARD OF DIRECTORS
SECTION 4.5 NOMINATION



1. It shall be the duty of the Board to appoint, not less than forty ~~(40)~~ 60 calendar days nor more than ninety (90) calendar days before the date of a meeting of the members at which directors are to be elected, a committee on nominations consisting of not less than six (6) or more than nine (9) members. At least one (1) member of the committee shall be selected from each geographic area where a director is to be elected. No director of the Board, close relative of a director, or employee may serve on such committee. The committee shall prepare and post at the principle office of the Cooperative, at least thirty ~~(30)~~ 50 calendar days before the meeting, a list of nominations for director(s) which shall include as many nominees for each Board position as the committee deems desirable. For the purpose of this section, close relative includes mother, father, husband, wife, sister, brother or child by blood, by marriage or by adoption, and spouses of the foregoing.
2. The Secretary shall be responsible for mailing with a Notice of the Meeting, or separately, but at least ten (10) calendar days before the date of the meeting, a statement of the number of directors to be elected and the names and addresses of the candidates nominated by the committee on nominations.
3. Any fifteen (15) or more members acting together may make other nominations by petition and the Secretary shall place such nominations at the same place where the list of nominations made by the committee is posted. Nominations made by petition, if any, must be received at least twenty ~~(20)~~ 40 calendar days before the meeting. Such ballot shall arrange the names of the candidates by geographic area and shall also designate the candidates nominated by the committee and those nominated by petition. The petition, at a minimum, shall include full name, as stated on application, phone number and current address.
4. Incumbent directors must be re-nominated by the committee or by petition to be re-elected.



★ RTC Scholarship ★ WINNERS

This year, RTC awarded four college scholarships, each in the amount of \$2,500. These scholarships were given to students that met our scholarship criteria, in order to recognize their outstanding academic and personal achievements as well as encourage their continued educational success.



KENNEDY CHREST
Kenmare High School

Daughter of Tami Chrest and Brad Chrest. Plans to attend Bismarck State College to major in Business Administration.



KORBIN KNUTSON
Watford City High School

Son of Troy and Kallie Knutson. Plans to attend Montana State University to major in Computer Science/Engineering.



BREE DIFFELY
Garrison High School

Daughter of Shawn and Sonja Diffely. Plans to attend North Dakota State University to major in Agri-business.



NICHOLAS THOMPSON
Max Public School

Son of Jeremy and Karen Thompson. Plans to attend University of Jamestown to major in Business Administration.

FRS YOUTH TOUR



Jessica Bingham, a junior at Max High School, attended the 2016 Foundation for Rural Service (FRS) Annual Youth Tour, June 4-8, 2016. Each year, in collaboration with National Telecommunications Cooperative Association member companies, FRS brings rural students from across the United States to Washington, D.C. for a four-day, expenses-paid tour.

While in Washington, Jessica learned about the telecommunications industry as well as the regulatory and legislative processes. She also visited the U.S. Capitol and the U.S. Department of Agriculture, and met with industry leaders

and members of Congress. Attendees were also given ample time to explore Washington, D.C. and its many attractions including the Lincoln and Jefferson Memorials; the Korean, Vietnam and World War II Memorials; Mount Vernon, home of George Washington; and the Smithsonian Museums.

Every year, RTC randomly selects a school within our serving area and that school selects a high school junior to attend the FRS Youth Tour. Max High School was drawn this year and Jessica Bingham was selected. Jessica is involved with school activities including band, choir, Character Counts Club, National Honor Society, and Math Counts. Jessica's extracurricular activities include volleyball, baseball, pep band, drama, and Western Plains Children's Choir. In her spare time, Jessica enjoys reading, playing musical instruments, listening to music, Sudoku, and biking.

SAFE DRIVING – INDIVIDUAL MILEAGE AWARD



RON SANDERSON

500,000
miles

EXCEPTIONAL EMPLOYEE AWARD WINNERS

The Exceptional Employee Award was developed to recognize RTC employees who go above and beyond the call of duty. These employees received the Exceptional Employee Award in 2015:



MICHELLE TWEED
1st quarter 2015



GENA BLUNCK
2nd quarter 2015



JEFF SHOBE
3rd quarter 2015



CARL BRUNSELL
4th quarter 2015

THANKS TO THESE RTC RETIREES

congratulations



CARL BRUNSELL, Utility Tech
27 Years of Service



PAUL WISNESS, Director
33 Years of Service

SERVICE AWARDS

The following RTC employees and directors have been recognized for their number of years of service to the cooperative as of the year ending 2015:

1 Year

KATIE DOCKTER
Field Engineer

ADAM GRINSTEAD
Combination Tech

ANDREW HANKINS
Cable Locator

STEPHANIE HAYDEN
Customer Service Rep Lead

DEREK HIXSON
Cable Locator

JON ROGNESS
Utility Tech

JEREMY ZACHER
Utility Tech

5 Years

GENA BLUNCK
Customer Service Rep

JERRY BRIEN JR.
Utility Tech

ASHLEY CAMPBELL
Customer Service Rep

TYRONE DAHLY
Central Office Tech

ALAN ENGEL
Cable Locator

SCOT NESS
Combination Tech

JOY RUUD
Purchasing Agent Coordinator

BARBARA STEINMETZ
RTC Board Vice-President

15 Years

KAREN HUBER
Customer Service Rep

LISA SCHENFISH
Customer Service Manager

20 Years

RICK HOVDA
Cable Locator Coordinator



RTC team



DAVID AAMOT
Chief Financial Officer



MONICA BANGEN
Customer Service Rep



JARETT BAUER
Combination Tech Coordinator



JASON BAUER
Central Office Tech



MORGAN BAUER
Computer Tech



CHAD BETZ
Outside Plant Manager—East



GENA BLUNCK
Customer Service Rep



BOB BLUNCK
Video Tech



ED BOICE
Combination Tech



JERRY BRIEN JR
Utility Tech



BRENDA BROWN
Customer Care Rep



MALCOLM "SPEEDY" BRUCE JR
Utility Tech Coordinator



JUDY BRUNSELL
Customer Care Rep



ASHLEY CAMPBELL
Customer Service Rep



MIKE CAMPBELL
Video Tech



DREW CARLSON
Fiber Splicer



KELLY COOPER
Purchasing Agent



TYRONE DAHLY
Central Office Tech



HALEY DESERLY
Customer Service Rep



KATIE DOCKTER
Field Engineer



JASON DUPAY
Combination Tech Coordinator



MATTHEW DUPAY
Combination Tech



GRETCHEN EDWARDS
Human Resources Manager



ED ELKINS
Utility Tech



GREG ELLIOT
Utility Tech



TERESA ELTON
Accounting Assistant



ALAN ENGEL
Cable Locator



PAT FITZGERALD
Combination Tech



DAVE FRANZEN
Utility Tech



BROOKS GOODALL
Chief Operations Officer



ADAM GRINSTEAD
Combination Tech



ANDREW HANKINS
Cable Locator



DEBBIE HANSEN
Customer Service Rep Coordinator



JON HANSEN
Field Engineer



ROB HANSEN
Account Executive



LACI HANSON
Customer Service Rep



SHANE HART
CEO/General Manager



TAMI HAUGE
Accountant



STEPHANIE HAYDEN
Customer Service Rep Lead



DEREK HIXSON
Cable Locator



JUSTINE HOMISTON
Purchasing Agent



RICK HOVDA
Cable Locator Coordinator



BERNIE HOWELL
Customer Service Rep



KAREN HUBER
Customer Service Rep



LORI HUUS
Customer Service Rep



ERIC JAEGER
Data Network Tech



FELICIA JARSKI
CABS Coordinator



TIM JARSKI
Construction Manager



CORY JOHNSON
Outside Plant Manager – West



DARYL JOHNSON
Business Systems Tech



LORI JOHNSON
Customer Service Rep



BRENDA KOK
Customer Care Rep Coordinator



TYLER KOLOBAKKEN
Combination Tech



GREG KORGEL
Combination Tech



NATHAN LAHTINEN
Computer Tech



JON LEE
Accountant



MACKENZIE LEE
Customer Care Rep



DANIEL LEPELL
Data Network Tech



BROCK LYNNE
Accountant



JESSIE MANY RIBS
Utility Tech



WESTON MINCER
Combination Tech



BELDEN MOBERG
Business Systems Tech



LESLIE NELSON
Customer Service Rep



SCOT NESS
Combination Tech



MARY NIELSEN
Right of Way Specialist



STAN OGLETREE
Combination Tech



VICKI OLSON
Customer Service Rep



DIANA POKRZYWINSKI
Account Executive



ALEX QUALE
Combination Tech



CHASE RENNER
Combination Tech



ERIK RENSCH
Utility Tech



JOHN RODGERS
Utility Tech



RONA ROGGENBUCK
Customer Service Rep



JON ROGNESS
Utility Tech



ERIC ROSS
Computer Tech



KEN ROSS
Cable Locator



JOY RUUD
Purchasing Agent
Coordinator



MIKE RYAN
Central Office
Tech Coordinator



JONATHAN SAMUELSON
Data Network Tech



RON SANDERSON
Cable Locator



JORDAN SCHAUBERT
Combination Tech



LISA SCHENFISCH
Customer Service Manager



DANIEL SCHILLA
Network Manager



MARY SEVERANCE
Accounting Coordinator



JEFF SHOBE
Combination Tech



JAKE SMITH
Fiber Splicer



VERNON SNYDER
Combination Tech



SHANNON STAFLIEN
Marketing Manager



ANDREW STEELE
Utility Tech



CASSIE STEELE
Cable Locator



CHAD TALBOTT
Data Network Tech Coordinator



ERIC THOMPSON
Combination Tech



PAT THUNSHELLE
Customer Service Rep



SCOTT TORGERSON
Accountant



BILLIE TRICKEY
Cable Locator



MICHELLE TWEED
Cable Locator



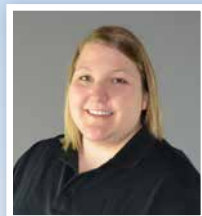
PAYTON TWO CROW
Utility Tech



DAVE UHLICH
Combination Tech Coordinator



JAMES VAAGEN
Central Office Tech



KALLIE VAN DE VENTER
Marketing Rep



BRAD VREM
Fiber Splicer



JANICE WARNER
Customer Service Rep



CHANCE WESTGARD
Mapping Tech



WAYNE WINTERBERG
Combination Tech



JAMALL WOLD
Combination Tech

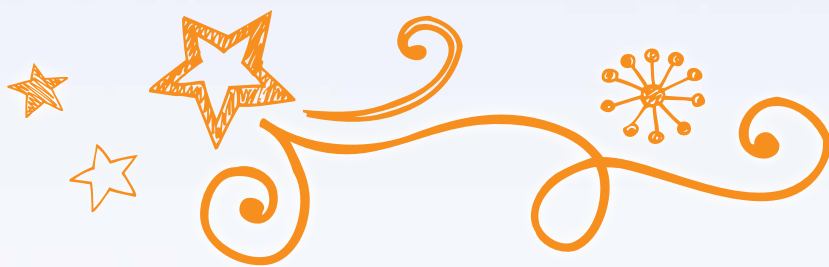


JEREMY ZACHER
Utility Tech

NOT PICTURED:

PAUL HELLEBUSH
Combination Tech

AMY KEELING
Computer Tech Lead



RTC MISSION

Our mission is to provide quality telecommunication services at competitive prices.

RTC VALUES & PRINCIPLES

- Guided by the Cooperative Philosophy
- Practice Sound Financial Management
 - Focus on the Customer
 - Value and Support Employees
- Support Our Local Communities

